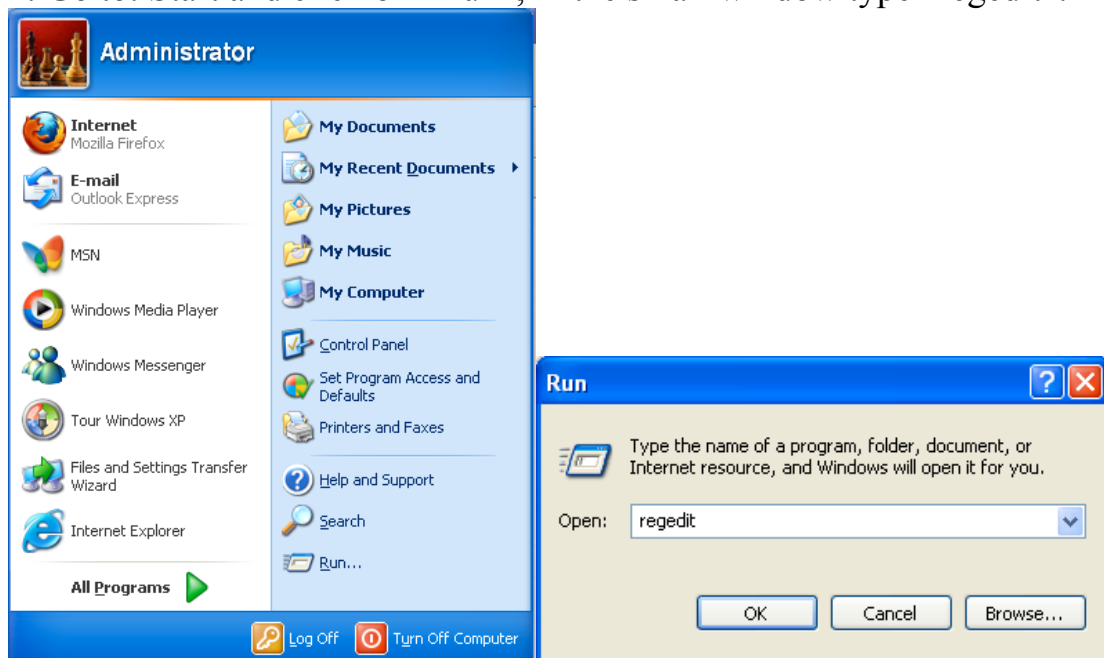


PS360+

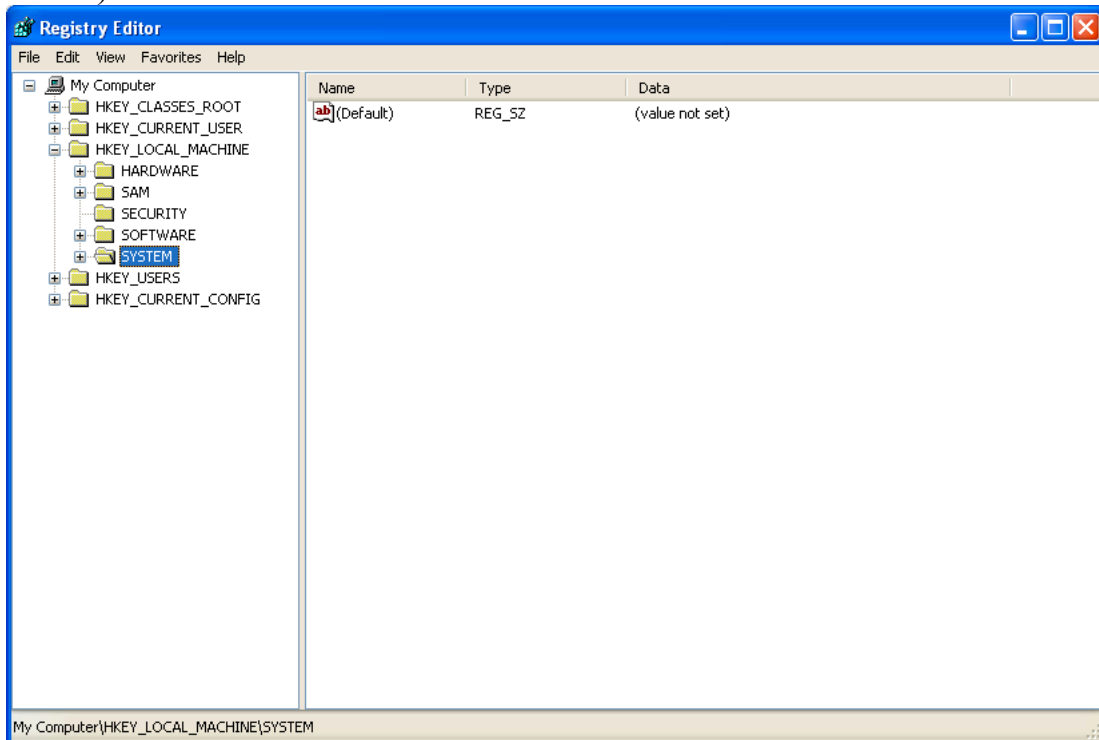
Descriptor Name

Since the update 1.23.hex for PS360+ it is now possible to see the correct descriptor name on for example Windows, but before it is possible you need to follow this simple guide:

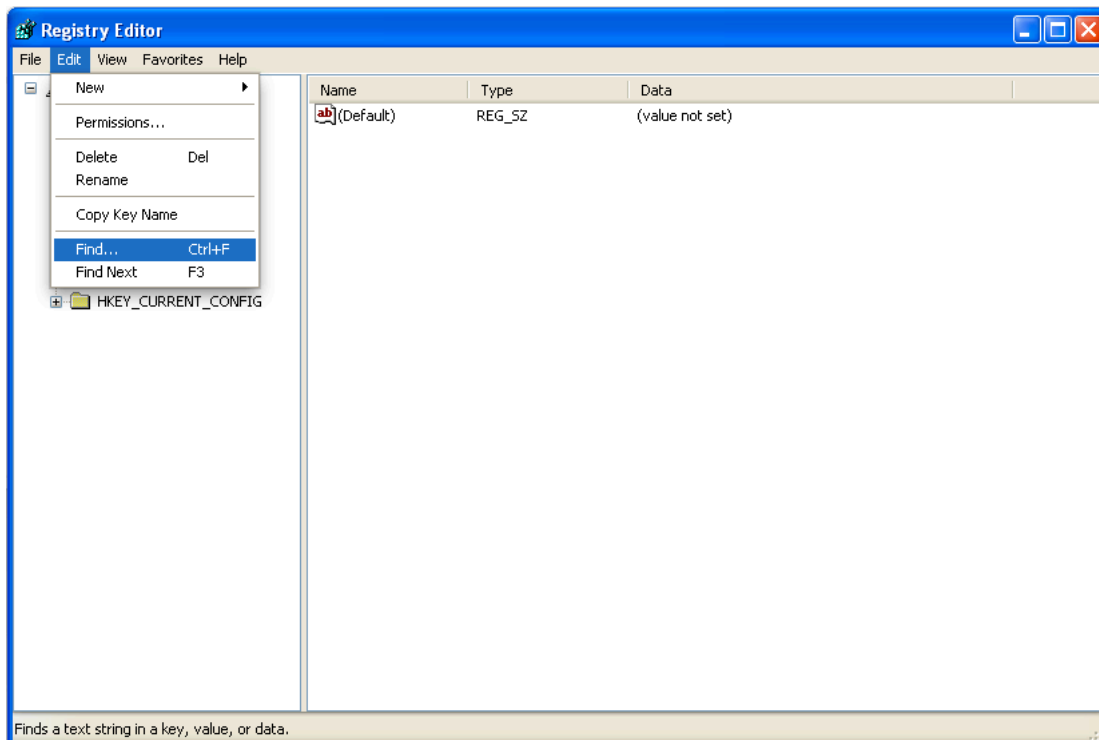
1. Go to: Start and click on "Run", in the small window type "regedit".



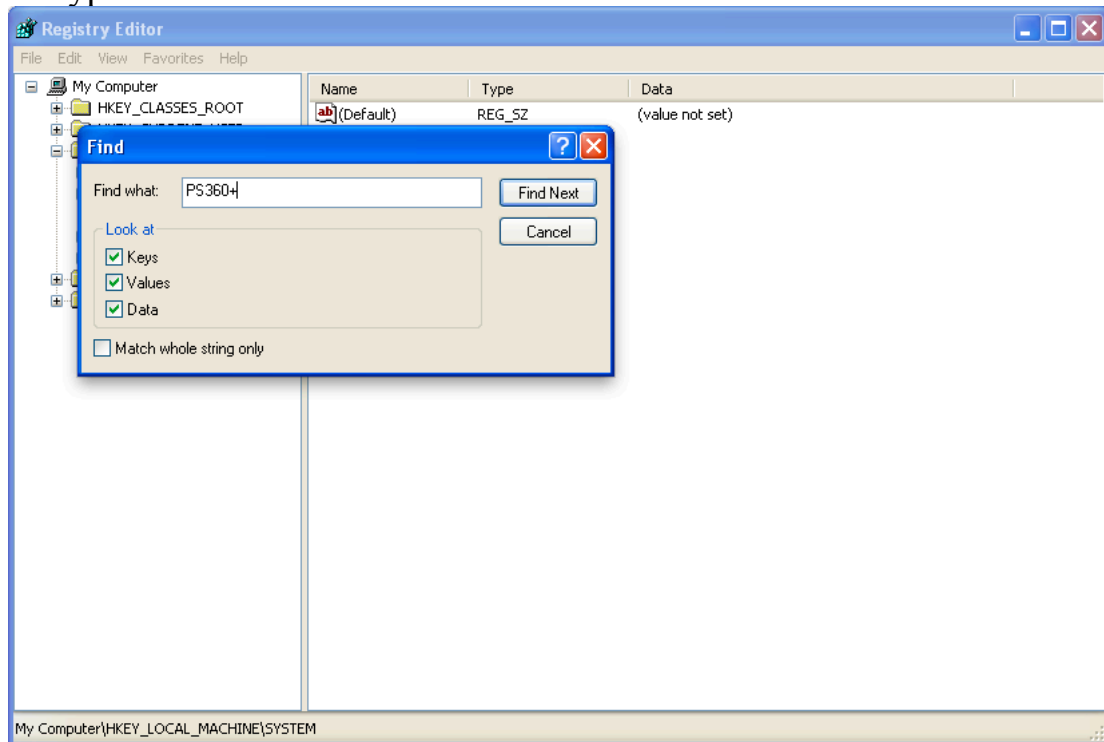
2. A new window will appear that is called "Registry Editor". In this window browse to "HKEY_LOCAL_MACHINE" and in the sub menu click on "SYSTEM" (make sure SYSTEM is highlighted like the picture below).



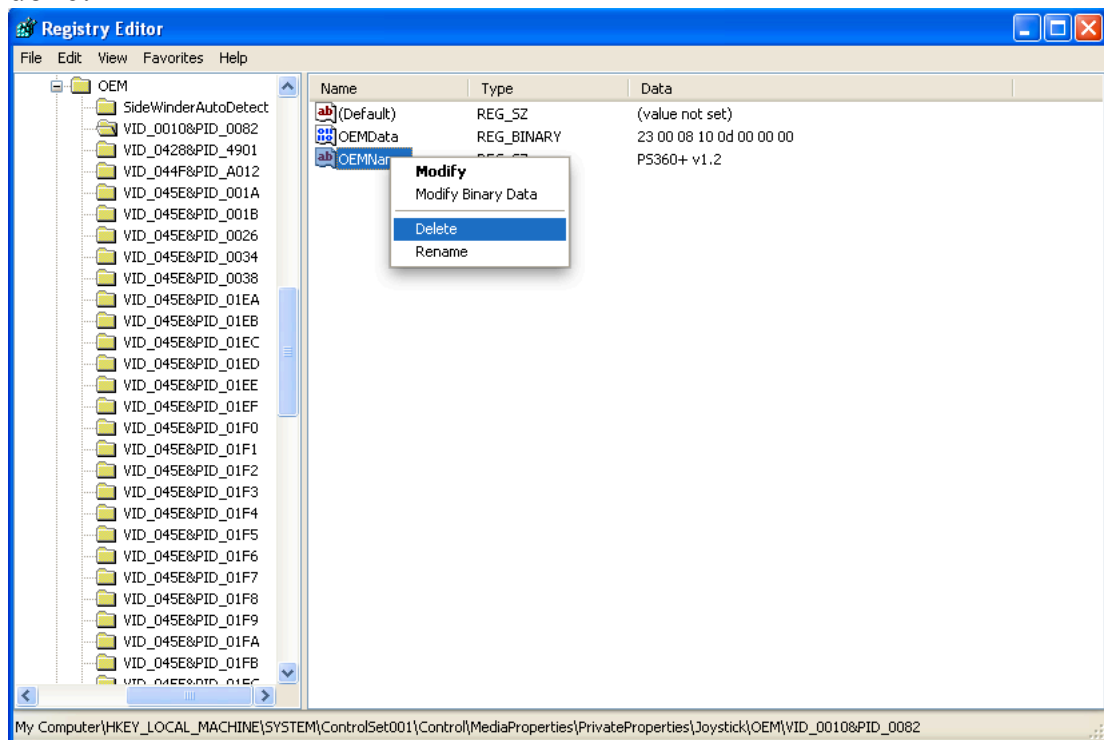
3. Go to Edit -> Find.



4. Type in the small window "PS360+". Click "Find Next".



5. You should see "OEMName" in the right side, right click on it and click "Delete". After that you can close down all the windows, your are done!



6. Plug in the PS360+ again to the PC, the descriptor name should be updated now.